

Thirty years' experience with electric winches has provided the BHW Group with the technical expertise necessary to provide cost effective winch solutions to a wide diversity of industries.

Close co-operation with vehicle conversion companies has enabled BHW to produce a series of safe, reliable and smooth running mobility systems that are an important aid to help ensure compliance with the EU manual handling regulations. Our systems are TUV approved.

This unobtrusive system is neatly concealed underneath the front seats with only the access tube and chair attachment straps visible.

Carers are able to wheel the chair and occupant up and down the inclined ramp in safety and without effort.

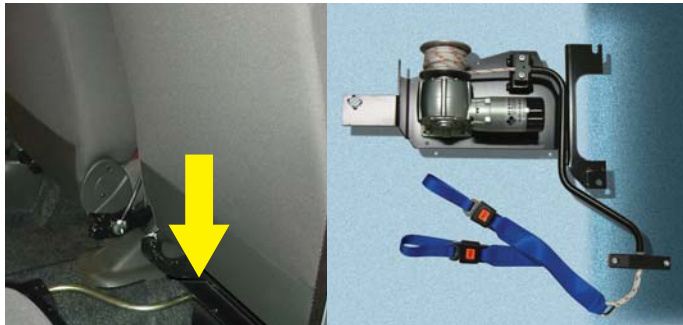
## WINCH•ASSIST Concealed Winch System for Wheelchair Access Vehicles



**FIAT DOBLO - LOW FLOOR**  
MOB0385



**FIAT DOBLO - HIGH ROOF**  
MOB0386



**WINCH•ASSIST** is a unique concealed unit mounted underneath the passenger seat, with a central guide for the winch rope and straps, ensuring a smooth, balanced operation.

The BHW Group are constantly updating the list of vehicles for WINCH•ASSIST.

Please call sales for the latest updates, or for parts enquiries.



**RENAULT KANGOO**  
MOB0380



**CITROEN BERLINGO**  
MOB0385



**FIAT SCUDDO**  
MOB0398



**FORD CONNECT TOURNEO**  
MOB0388



**PEUGEOT EXPERT**  
MOB0398



**VW CADDY**  
MOB0390



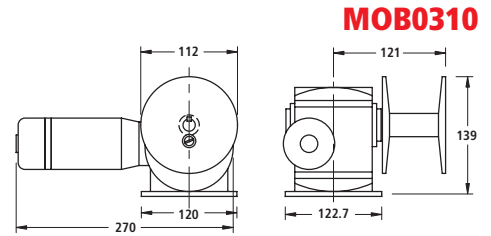
**BUSHEY HALL** Lismirrane Industrial Park Elstree Road Elstree Herts WD6 3EE T: +44 (0)20 8953 6050 F: +44 (0)20 8207 5308  
**WINCHMASTER** Unit 6 South Orbital Trading Park Hedon Road Hull HU9 1NJ T: +44 (0)1482 223663 F: +44 (0)1482 218285

**CENTRAL SALES 0870 850 8989**  
E: [sales@bhwwgroup.co.uk](mailto:sales@bhwwgroup.co.uk) W: [www.bhwwgroup.co.uk](http://www.bhwwgroup.co.uk)

**UNDER SEAT WINCH KIT PARTS** Please ensure that you quote the correct code numbers for the right vehicle:

**DC WINCH**

- Safe working load 800N
- Line speed mean average 7.5m/m
- Amperage draw 25 amps
- No motor brake.
- All gears running in oil.



**MOB0310**

**UNDER SEAT MOUNTING BRACKET & ROPE GUIDE**

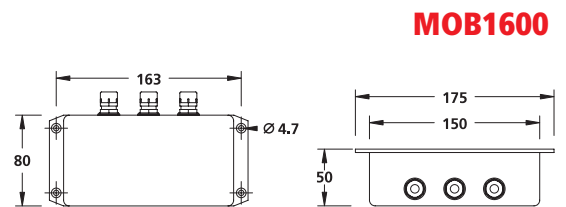


Mounting brackets and rope guides are normally only sold as part of a complete kit for specific vehicles.

Should you need replacements for any reason, please contact our sales team, who will be happy to help.

**ELECTRICAL RELAY PACK**

12v relay box with thermal cut out switch.  
System includes motor filter for EU compliance with the EMC Directive.



**MOB1600**

**WANDERLEAD**

**WL0015**



Wanderlead control with flexible cable and jack socket.

**WEB STRAPS & ROPE**

**ST0651**



**CONTROL PANEL**

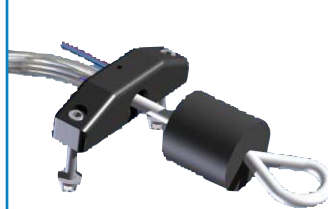
**MOB1015**



Includes:  
Emergency Stop, On/Off and Reset buttons.  
Jack socket to accept wanderlead control.

**AUTOMATIC SAFETY CUT OFF SWITCH**

**MOB1044**



**NON-STANDARD OPTION**

The soft rubber buffer fitted onto the rope activates unique safety pressure STOP switch integral with the exit tube-securing bracket.  
The soft rubber buffer also prevents the possibility of trapped fingers or hands whilst retrieving the winch rope.

The BHW Group are constantly updating the list of vehicles for WINCH•ASSIST.

Please call sales for the latest updates, or for parts enquiries.

**BUSHEY HALL** Lismirrane Industrial Park Elstree Road Elstree Herts WD6 3EE T: +44 (0)20 8953 6050 F: +44 (0)20 8207 5308

**WINCHMASTER** Unit 6 South Orbital Trading Park Hedon Road Hull HU9 1NJ T: +44 (0)1482 223663 F: +44 (0)1482 218285

**CENTRAL SALES 0870 850 8989**

**E: sales@bhwgroup.co.uk W: www.bhwgroup.co.uk**

