

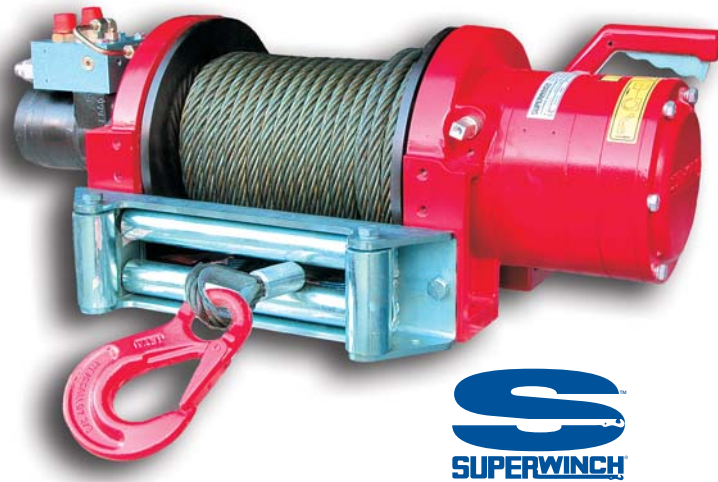
WinchMaster

SPECIALIST WINCH SOLUTIONS

SUPERWINCH H12P/H14P Heavy Duty Hydraulic Planetary Recovery Winches

FEATURES INCLUDE:

- **Winch**
Robust, heavy duty construction
- **Gearbox**
High efficiency 2 stage planetary giving optimum reliability
- **Brake**
Integral, spring applied, hydraulic released, full load holding
- **Motor**
Rugged, high torque, low speed unit of proven reliability
- **Free spooling**
Interlocked, manual lever for rapid rope pay-out, pneumatic option available
- **Drum**
Heavy duty steel, mounted on maintenance-free plain bearings
- **Load control valve**
Fitted as standard to ensure complete load control
- **Testing**
All winches are load tested before shipping
- **12 months warranty**
On parts and service (excluding wire rope)
- **Fitting service**
Full or partial fitting can be provided, including load testing and certification
- **After sales service**
Technical advice given on winch fitting and component replacement, plus efficient overnight parts despatch and fast repairs



A SUPERWINCH DISTRIBUTOR WITH THE EMPHASIS ON TECHNICAL EXPERTISE

Professional operators want the best technical advice when selecting a winch. They need to be sure that the product they buy is the safest and most suitable for the job, providing complete reliability and minimal vehicle down time.

Winchmaster sales engineers provide valuable advice and guidance, plus a comprehensive winch installation service. They pride themselves in giving a comprehensive parts backup – with next day delivery throughout the UK.

A service that sets Winchmaster apart from other Superwinch dealers!

APPLICATIONS

The Superwinch H12P/H14P – rugged, heavy duty, high quality 5,450/6,350 kg planetary drive hydraulic winches, engineered to ensure reliability.

Designed to provide Professional Vehicle Recovery & Plant Operators with a dependable, heavy duty unit for a wide range of applications.

OPTIONS

- **Cable tensioner**

WINCHMASTER Unit 6 South Orbital Trading Park Hedon Road Hull HU9 1NJ
T: +44 (0)1482 223663 F: +44 (0)1482 218285

CALL SALES ON 01482 223663
E: sales@winchmaster.co.uk W: www.winchmaster.co.uk

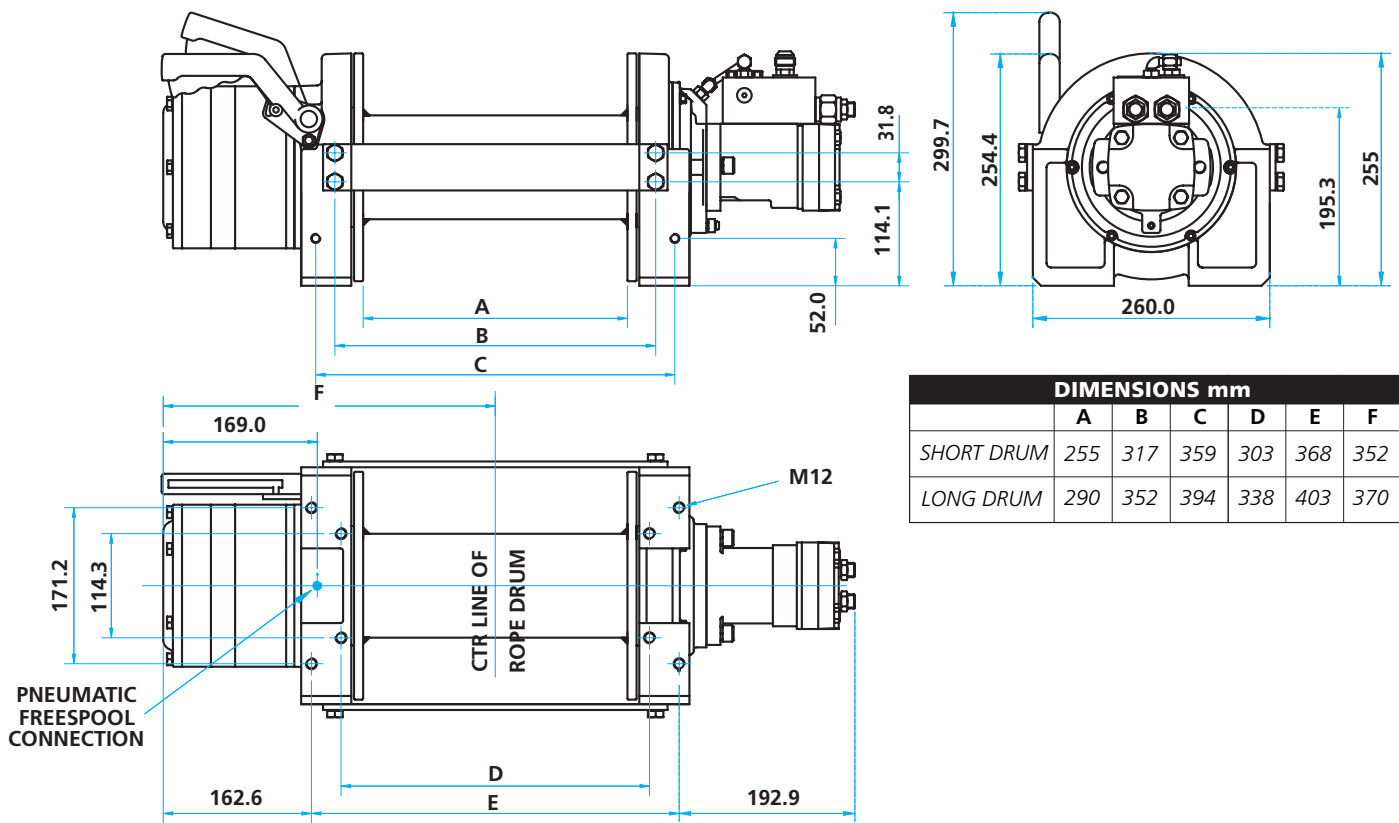
A DIVISION OF
BHW
GROUP
LIMITED

WINCHMASTER IS A DIVISION OF THE BHW GROUP LIMITED REGISTERED IN ENGLAND No. 1342461

WM08/01.09.07



CERT. No. 1769



SPECIFICATIONS

	H12P
Rated Line Pull, Bottom Layer:	53.3kN, (5,450kg)
Line Speed, Bottom Layer, No Load:	10.6m/min
Wire Rope Diameter, Recommended:	12mm
Wire Rope Length, Short Drum:	30m
Wire Rope Length, Long Drum:	40m
Drum Diameter:	102m
Weight:	61kg

H14P

Rated Line Pull, Bottom Layer:	62.3kN, (6,350kg)
Line Speed, Bottom Layer, No Load:	8.4m/min
Wire Rope Diameter, Recommended:	13mm
Wire Rope Length, Short Drum:	30m
Wire Rope Length, Long Drum:	40m
Drum Diameter:	114mm
Weight:	61kg

PERFORMANCE

	H12P	H14P
Maximum Oil Pressure:	150 bar (2,200 psi)	150 bar (2,200psi)
Maximum Oil Flow:	57 l/min	57 l/min
Line Pull, 2nd Layer:	44.1kN, (4,500kg)	51.7kN, (5,280kg)
Line Pull, 3rd Layer:	37.5N, (3,830kg)	44.2N, (4,520kg)
Line Pull, 3rd Layer:	32.7kN, (3,340kg)	38.6kN, (3,940kg)

WARNING

These winches must not be used for the movement of personnel and 5 wraps of wire rope must be maintained on the drum.

WARRANTY

Each new winch is guaranteed against defects in workmanship and material defects for a period of twelve months from date of purchase.

WIRE ROPES ARE NOT INCLUDED UNDER WARRANTY.