

# WinchMaster

SPECIALIST WINCH SOLUTIONS

COMPLIANT WITH EN 14492 REGULATIONS



## NEW EUROPEAN STANDARDS & WINCHMASTER

**New Harmonised European Standards: EN14492-1 for power driven winches, EN14492-2 for power driven hoists** provide the means for conformity to essential Health and Safety requirements of the EC Machinery Directive.

**Conformity to these standards** is the joint responsibility of the supplier, the installer and the company operating the product.

**CE** Winchmaster products are fully compliant and carry a CE mark. A Declaration of Conformity is also supplied with each winch or hoist.

**Selecting the correct winch or hoist** for the application is very important not only from the health and safety aspect, but also to maximise product life and value for money.

**Our aim at Winchmaster** is to ensure the correct machine is supplied to suit the application and we welcome the opportunity of discussing the proposed application and offer advice. It will help us considerably if information regarding the maximum and average loads to be lifted or pulled - and approximate frequency of use can be provided.

**For hoisting applications** the minimum breaking force (MBF\*\*) of the wire rope must be 5 x the lifting capacity of the hoist. The ratio of wire rope diameter to mean drum diameter\* is usually at least 15:1. This will vary according to the application, the average operating time per day and the average and maximum weights being lifted.

**For pulling applications** (for example, in factories) as a general rule requires a wire rope with a MBF\*\* relative to winch capacity of 3:1 and a rope to mean drum ratio\* of 12:1.

**For recovery vehicles** the permissible standard of wire rope MBF\*\* to winch rating can be a minimum 2:1 and the ratio of wire rope to mean drum ratio\* only 10:1. This minimum standard is permitted because the running time is so short and the winch rarely sees maximum load.

**Wire rope capacities** the maximum amount of wire rope on the drum must leave a freeboard to the top of the drum flange of 1.5 x wire rope diameter to prevent the wire rope coming off the drum.

**Winches and hoists with capacities over 1000kg** must be load limited.

\* Mean drum diameter = the drum diameter plus the diameter of the wire rope.

\*\* MBF = the Minimum Breaking Force of the wire rope.

## COMPACT WINCHES 80-300kg CWL-80 (80kg), CWL-200 / 200L (200kg) CWL301 / 301L (300kg)

110v or 240v x 1ph AC on most models

*These lightweight, fast and efficient single phase winches are the ideal general purpose machines - and cannot be beaten for portable applications.*

### FEATURES INCLUDE:

- **Available in 110v and 240v x 1ph**  
CWL200 & CWL200L = 110v & 240v  
CWL80 & CWL301L = 240v only
- **Operates on standard household power supply**  
In case of 110v version via transformer
- **Dynamic and mechanical brake**  
Provides instant and safe braking
- **Lightweight and compact design**  
For easy installation
- **Foot mounted**  
Can be installed upside down
- **Enclosed drum flange**  
Prevents ropes becoming trapped between drum and support castings
- **Complete with wire rope**  
Galvanised for longer life
- **360° weighted safety hook**  
Swivel type with safety catch
- **10 metre pendant control**  
Plug-in, with 2 buttons and emergency stop
- **3 metre power lead**  
Pre-wired to the winch with commercial type plug
- **Motor rating IP44**  
Brush type motor - no options

### ADDITIONAL EQUIPMENT FROM WINCHMASTER

- **Pendant control, plug in extension - for additional 10m length**

**TO ESTABLISH WHICH WINCH OR HOIST IS SUITABLE FOR YOUR PROJECT, CALL WINCHMASTER NOW ON 01482 223663**

**WINCHMASTER** Unit 6 South Orbital Trading Park Hedon Road Hull HU9 1NJ

T: +44 (0)1482 223663 F: +44 (0)1482 218285

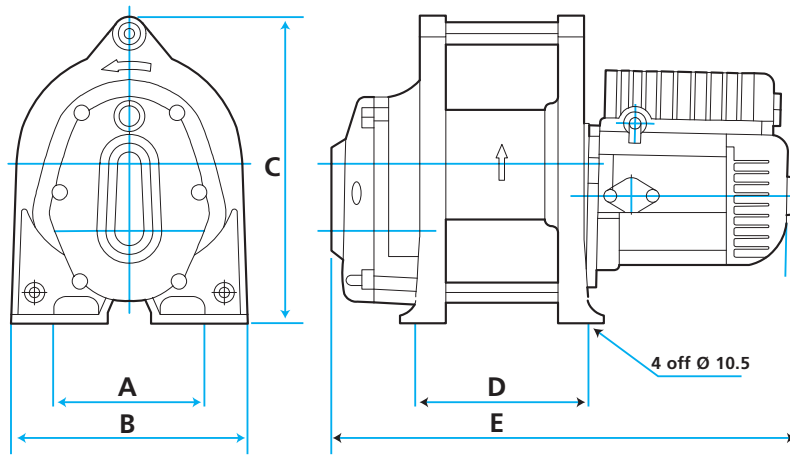
**CALL SALES ON 01482 223663**

E: [sales@winchmaster.co.uk](mailto:sales@winchmaster.co.uk) W: [www.winchmaster.co.uk](http://www.winchmaster.co.uk)

A DIVISION OF  
**BHW**  
GROUP  
LIMITED



CERT. No. 1769



WINCH DIMENSIONS mm						
MODEL	A	B	C	D	E	Fixing holes
CWL80	135	200	210	125	344	4 off Ø 10.5
CWL200 / 301	135	210	270	152	415	4 off Ø 10.5
CWL200L / 301L	135	210	270	207	470	4 off Ø 10.5

## SPECIFICATIONS

### CWL80

### CWL200

### CWL200L

### CWL301

### CWL301L

Voltage options:	240v 1ph	110v 1ph 240v 1ph	110v 1ph 240v 1ph	240v 1ph
Lifting: Capacity:	80kg	200kg	200kg	300kg
Height of lift:	23m	45m	69m	29m 53m
Weight: Winch only	16kg	30kg	33kg	38kg 40kg
Total kit (ave.)	18kg	32kg	35kg	40kg 42kg
Line speed: 1st layer	16m/min	11m/min	11m/min	16m/min
Last layer	25m/min	16m/min	16m/min	25m/min
Duty cycle:	All 1ph have a duty cycle of 25%, with a maximum of 60 starts per hour			
Wire rope: ø x length	4mm x 24m	5mm x 46m	5mm x 71m	6mm x 30m 6mm x 55m
Construction	6 x 19 wire core, galvanised for longer life. Factor of safety 5:1			
Motor type:	Permanent magnet	Induction motor		
Outputs: Kilowatts	0.3kw	1.2kw	1.2kw	2.3kw
Amperes	6amp	12amp 6amp	12amp 6amp	11amp
Braking:	Motors: Electronic via resistor		Gears: Mechanical ratchet brake	
Drum: Length	46mm	97mm	147mm	97mm 147mm
Diameter	70mm	95mm	95mm	95mm
ø Flange	158mm	190mm	190mm	190mm
Rope ø to mean drum ø ratio*	18:1	20:1	20:1	17:1

\* Mean drum diameter = the drum diameter plus the diameter of the wire rope

## NOTES

These winches must not be used for the movement of personnel and 7 wraps of wire rope must be maintained on the drum.

Data shown is approximate and intended as a guide only.

## WARRANTY

Each new winch is guaranteed against defects in workmanship and material defects for a period of twelve months from date of purchase.

**WIRE ROPES ARE NOT INCLUDED UNDER WARRANTY.**

**WINCHMASTER** Unit 6 South Orbital Trading Park Hedon Road Hull HU9 1NJ

T: +44 (0)1482 223663 F: +44 (0)1482 218285



**CALL SALES ON 01482 223663**  
E: sales@winchmaster.co.uk W: www.winchmaster.co.uk

WINCHMASTER IS A DIVISION OF THE BHW GROUP LIMITED REGISTERED IN ENGLAND No. 1342461

WM14/02.03.09



CERT. No. 1769