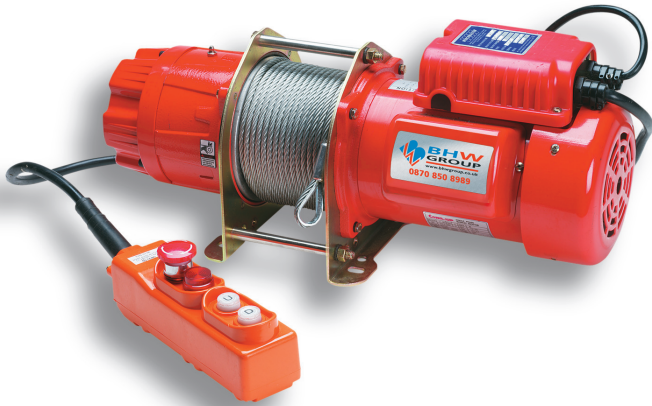


# WinchMaster

SPECIALIST WINCH SOLUTIONS

COMPLIANT WITH EN 14492 REGULATIONS



## CWG LIFTING WINCHES 300kg

**CWG10077 (300kg)**

**CWG30075 (300kg)**

110v or 240v x 1ph or 415v x 3ph AC

### NEW EUROPEAN STANDARDS & WINCHMASTER

**New Harmonised European Standards: EN14492-1 for power driven winches, EN14492-2 for power driven hoists** provide the means for conformity to essential Health and Safety requirements of the EC Machinery Directive.

**Conformity to these standards** is the joint responsibility of the supplier, the installer and the company operating the product.

**CE** Winchmaster products are fully compliant and carry a CE mark. A Declaration of Conformity is also supplied with each winch or hoist.

**Selecting the correct winch or hoist** for the application is very important not only from the health and safety aspect, but also to maximise product life and value for money.

**Our aim at Winchmaster** is to ensure the correct machine is supplied to suit the application and we welcome the opportunity of discussing the proposed application and offer advice. It will help us considerably if information regarding the maximum and average loads to be lifted or pulled - and approximate frequency of use can be provided.

**For hoisting applications** the minimum breaking force (MBF\*\*) of the wire rope must be 5 x the lifting capacity of the hoist. The ratio of wire rope diameter to mean drum diameter\* is usually at least 15:1. This will vary according to the application, the average operating time per day and the average and maximum weights being lifted.

**For pulling applications** (for example, in factories) as a general rule requires a wire rope with a MBF\*\* relative to winch capacity of 3:1 and a rope to mean drum ratio\* of 12:1.

**For recovery vehicles** the permissible standard of wire rope MBF\*\* to winch rating can be a minimum 2:1 and the ratio of wire rope to mean drum ratio\* only 10:1. This minimum standard is permitted because the running time is so short and the winch rarely sees maximum load.

**Wire rope capacities** the maximum amount of wire rope on the drum must leave a freeboard to the top of the drum flange of 1.5 x wire rope diameter to prevent the wire rope coming off the drum.

**Winches and hoists with capacities over 1000kg** must be load limited.

\* Mean drum diameter = the drum diameter plus the diameter of the wire rope.

\*\* MBF = the Minimum Breaking Force of the wire rope.

### FEATURES INCLUDE

- **Single or 3 phase options**  
CWG10077 = 110v or 240v x 1ph  
CWG30075 = 415v x 3ph (Includes low voltage control)
- **Electromagnetic, spring applied, failsafe brake**  
Provides instant, safe braking
- **Bi-rotational**  
CWG winches can be installed with wire rope coming off the top or bottom of the drum
- **Enclosed drum flange**  
Prevents rope becoming trapped between drum and support casing
- **Complete with wire rope**  
Galvanised for longer life
- **Compact design**  
For easy installation
- **360° weighted safety hook**  
Swivel type with safety catch
- **2 metre power lead**  
Pre-wired to the winch with commercial type plug
- **Motor to IP44 as standard**  
Brush type motor, no options

### ADDITIONAL EQUIPMENT FROM WINCHMASTER

- **Low voltage control (Supplied as standard on 3ph)**
- **Radio remote control - via low voltage control**
- **Weather proof enclosure**

**TO ESTABLISH WHICH WINCH OR HOIST IS SUITABLE FOR YOUR PROJECT, CALL WINCHMASTER NOW ON 01482 223663**

**WINCHMASTER** Unit 6 South Orbital Trading Park Hedon Road Hull HU9 1NJ

T: +44 (0)1482 223663 F: +44 (0)1482 218285

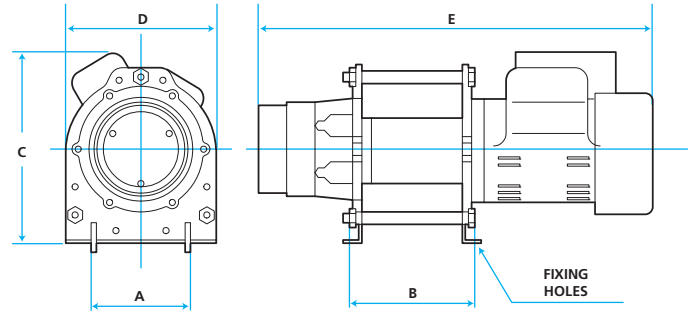
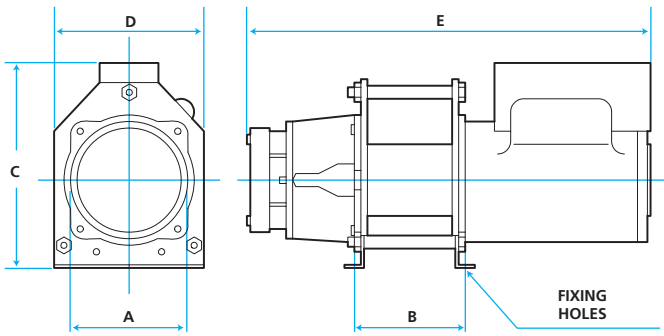
**CALL SALES ON 01482 223663**

E: [sales@winchmaster.co.uk](mailto:sales@winchmaster.co.uk) W: [www.winchmaster.co.uk](http://www.winchmaster.co.uk)

A DIVISION OF  
**BHW**  
**GROUP**  
**LIMITED**



CERT. NO. 1769



CWG 10077 WINCH DIMENSIONS mm						
MODEL	A	B	C	D	E	Fixing holes
CWG10077	156	197	300	252	624	4 off Ø 13.5

CWG30075 WINCH DIMENSIONS mm						
MODEL	A	B	C	D	E	Fixing holes
CWG30075	142	142	241	210	548	4 off Ø 10.5

## SPECIFICATIONS

### CWG10077

### CWG30075

<b>Voltage options:</b>		110v 1ph	240v 1ph	415v 3ph
<b>Lifting:</b>	Capacity	300kg	300kg	300kg
	Height of lift		43m	29m
<b>Weight:</b>	Winch only	42kg		32kg
	Total kit average	44kg		34kg
<b>Line speed:</b>	1st layer	12m/min		10m/min
	Last layer	18m/min		15m/min
<b>Duty cycle:</b>		1ph have a duty cycle of 25%, with a max. of 60 starts per hour		
<b>Wire rope:</b>	Ø x length	6mm x 45m		5mm x 30m
	Safety factor	Minimum factor of safety 5:1		
<b>Motor type:</b>		Induction motor		
<b>Outputs:</b>	Kilowatts	1.5kw	1.5kw	0.75kw
	Amperes	20amp	10.6amp	1.8amp
<b>Braking:</b>		Electromagnetic spring applied failsafe		
<b>Drum:</b>	Length	150mm		110mm
	Diameter	102mm		94mm
	Ø Flange	180mm		154mm
<b>Rope Ø to mean drum Ø ratio:</b>		18:1		20:1

## NOTES

These winches must not be used for the movement of personnel and 7 wraps of wire rope must be maintained on the drum.

Data shown is approximate and intended as a guide only.

## WARRANTY

Each new winch is guaranteed against defects in workmanship and material defects for a period of twelve months from date of purchase.

**WIRE ROPES ARE NOT INCLUDED UNDER WARRANTY.**

**WINCHMASTER** Unit 6 South Orbital Trading Park Hedon Road Hull HU9 1NJ

T: +44 (0)1482 223663 F: +44 (0)1482 218285



**CALL SALES ON 01482 223663**  
E: sales@winchmaster.co.uk W: www.winchmaster.co.uk

WINCHMASTER IS A DIVISION OF THE BHW GROUP LIMITED REGISTERED IN ENGLAND No. 1342461

WM16/04.03.09



CERT. No. 1769