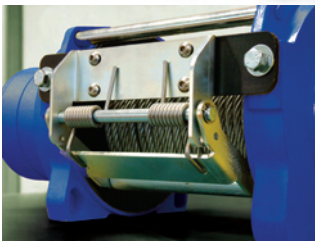
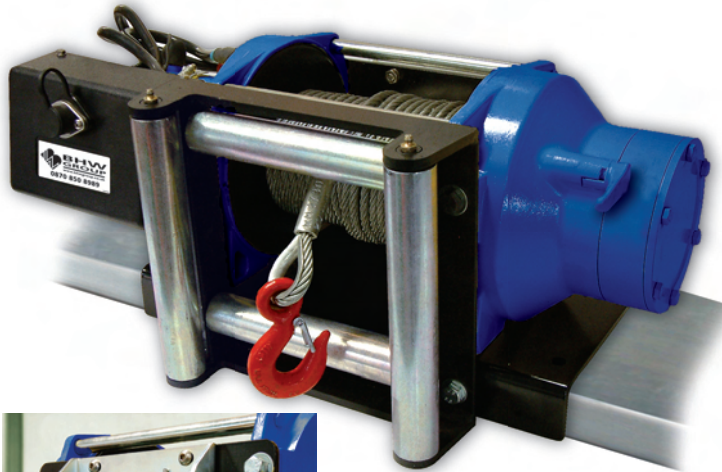


WinchMaster

SPECIALIST WINCH SOLUTIONS



Fallen stock winch shown with optional roller guides and mounting plate

Detail of rope tensioner (mounted on back of winch)

Specifically designed by Winchmaster to recover fallen stock, this low profile winch enables the fitting to be high on the body bulkhead to provide the ideal angle of pull.

Based on a tried and tested Ramsey winch the Fallen Stock machine comes as standard with rope tensioner, fused link and isolator switch.

The controlled line speed is ideal for this application and is almost constant with minimal drop off under load.

The mounting plate has been specially designed to make installation on the bulkhead as simple as possible.

The optional heavy-duty roller guide features a wide throat that eliminates pressure being applied to the lower roller from the wire rope during the winching-on process. This prevents both grooving of the roller and damage to the rope and in addition the rope is able to wrap more neatly onto the drum.

OPTIONS

- Heavy duty IP65 rated solenoid pack
- Wide gate roller guides
- Mounting plate
- Auxiliary wanderlead socket for remote working (Please ask about wanderlead options)
- FM•CONNECT remote radio control
- Emergency stop system
- Snatch block



FALLEN STOCK WINCH

Planetary Electric DC Winch

FEATURES INCLUDE:

- **2000Kg line pull in compliance with EN 14492-1**
- **3 stage planetary gearing**
For high efficiency
- **Low profile design**
Easily fitted supplied ready to fit on custom mounting plate
- **Cam action freespool clutch**
- **Powerful high efficiency ball bearing 12v and 24v motor**
- **High duty cycle**
Reduced maintenance and service costs
- **Rope tensioner**
For improved rope layering and extended rope life
- **Fused link and isolator switch as standard**
- **12 months warranty**
On parts and service (excluding wire rope)
- **Fitting service**
Full or partial fitting can be provided, including load testing and certification
- **After sales service**
Technical advice given on winch fitting and component replacement, plus efficient overnight parts despatch and fast repairs



Fallen stock winch in position - (without roller guides or mounting plate)

WINCHMASTER Unit 6 South Orbital Trading Park Hedon Road Hull HU9 1NJ
T: +44 (0)1482 223663 F: +44 (0)1482 218285

A DIVISION OF
BHW
GROUP
LIMITED

CALL SALES ON 01482 223663
E: sales@winchmaster.co.uk W: www.winchmaster.co.uk

WINCHMASTER IS A DIVISION OF THE BHW GROUP LIMITED REGISTERED IN ENGLAND No. 1342461

WM30/24.10.07



CERT. No. 1769

